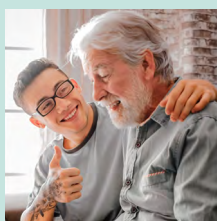
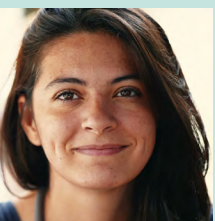
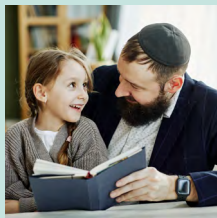


The **NHS Jewish BRCA**
Testing Programme



The facts

Everyone has two BRCA genes - BRCA1 and BRCA2 - that play an important role in the prevention of cancer. If an individual has a spelling mistake or fault/mutation in either of these genes, they are at increased risk for developing certain cancer types. BRCA mutations are inherited dominantly – there is a 50% chance a gene fault will be passed on from parent to child. Both men and women can have faulty BRCA genes and can pass these on to their children.

Female Cancer Risk Over Lifetime			
Cancer	General population	With BRCA1 gene fault	With BRCA2 gene fault
Breast	11.5%	72%	69%
Ovarian	1.5%	44%	17%
Pancreatic	1.0%	Not elevated	2%

Male Cancer Risk Over Lifetime			
Cancer	General population	With BRCA1 gene fault	With BRCA2 gene fault
Breast	Less than 0.1%	0.4%	4%
Prostate	12.5%	Not elevated	27%
Pancreatic	1.0%	3%	4-5%

BRCA mutations are more common in those with Jewish ancestry compared to the general population. 1 in 40 Ashkenazi Jews and around 1 in 140 Sephardi Jews have a BRCA gene fault, compared to around 1 in 250 individuals in the UK general population.

1 in 40 Ashkenazi Jews	1 in 140 Sephardi Jews	1 in 250 UK general population
---------------------------------------	-----------------------------------	---

Up to 4 in 10 ovarian cancers and 1 in 10 breast cancers in the Jewish community are caused by a BRCA mutation. These cancers are potentially preventable.

Knowing you have a BRCA gene fault allows you to access a **range of options that help to manage and reduce cancer risk. These are available on the NHS.**

Testing for BRCA faults within the Jewish population is critical for the prevention or early detection of the BRCA-associated cancers.

The new testing programme

In early 2024, NHS England launched **The Jewish BRCA Testing Programme.** This is a new, free, dedicated testing service for the Jewish population. Anyone living in England who is aged 18 or over and has 1 or more Jewish grandparent, of any Jewish origin, may take part.

The programme will identify individuals with a BRCA mutation and refer them to their regional genetic centres to begin managing their elevated cancer risk.

Why now?

In line with medical research, it is now considered best practice to offer BRCA gene testing to all Jewish people, irrespective of their own personal or family history of cancer. A similar approach has already been adopted in Israel. Using this method will inevitably prevent more cancers and ultimately save more lives.

The Jnetics & Chai Cancer Care community engagement campaign

Jnetics and Chai have been officially appointed by NHS England to lead a community-wide engagement campaign supporting the new testing programme. The campaign will educate and inform the community about BRCA testing and both the personal and wider-family implications of receiving a positive result.

For more information, or if you are interested in running bespoke informational events for your community / network, please contact us at info@jewishbrca.org

How to do I sign up for testing and what are the next steps?

1. Expression of interest – follow the sign-up link at jewishbrca.org or via the genetic counselling helpline **(+44 20 3437 6001)**
2. Receipt of screening pack in post
3. Review of pre-test information
4. Completion of forms and provision of saliva sample
5. Returning screening pack
6. Receipt of results letter

Where to find more information

jewishbrca.org - Web page on the Jewish BRCA Testing Programme with more information, Q&As and link to sign up.

Jnetics (jnetics.org/brca/ or tel: 020 8158 5123)

A cross community charity dedicated to the prevention and diagnosis of Jewish genetic disorders.



Chai Cancer Care (chaicancercare.org or tel: 0808 808 4567)

Expert support services for any member of the Jewish community affected by cancer, has concerns about BRCA or identified as having a BRCA gene mutation.



Dedicated NHS genetics helpline for the NHS Jewish BRCA Testing Programme at 020 3437 6001 or email: jewishbrca.programme@nhs.net

The helpline is open Monday to Friday, 9:00am to 5:00pm (extended hours to 7:00pm on Wednesdays) offering further information and support throughout the process from a genetic counsellor.



www.jnetics.org
info@jnetics.org

[f](#) [@](#) [@jneticsuk](#)

Registered Charity No. 1134935

May 2024

www.chaicancercare.org
info@chaicancercare.org

[f](#) [@](#) [@chaicancercare](#)

Registered Charity No. 1078956